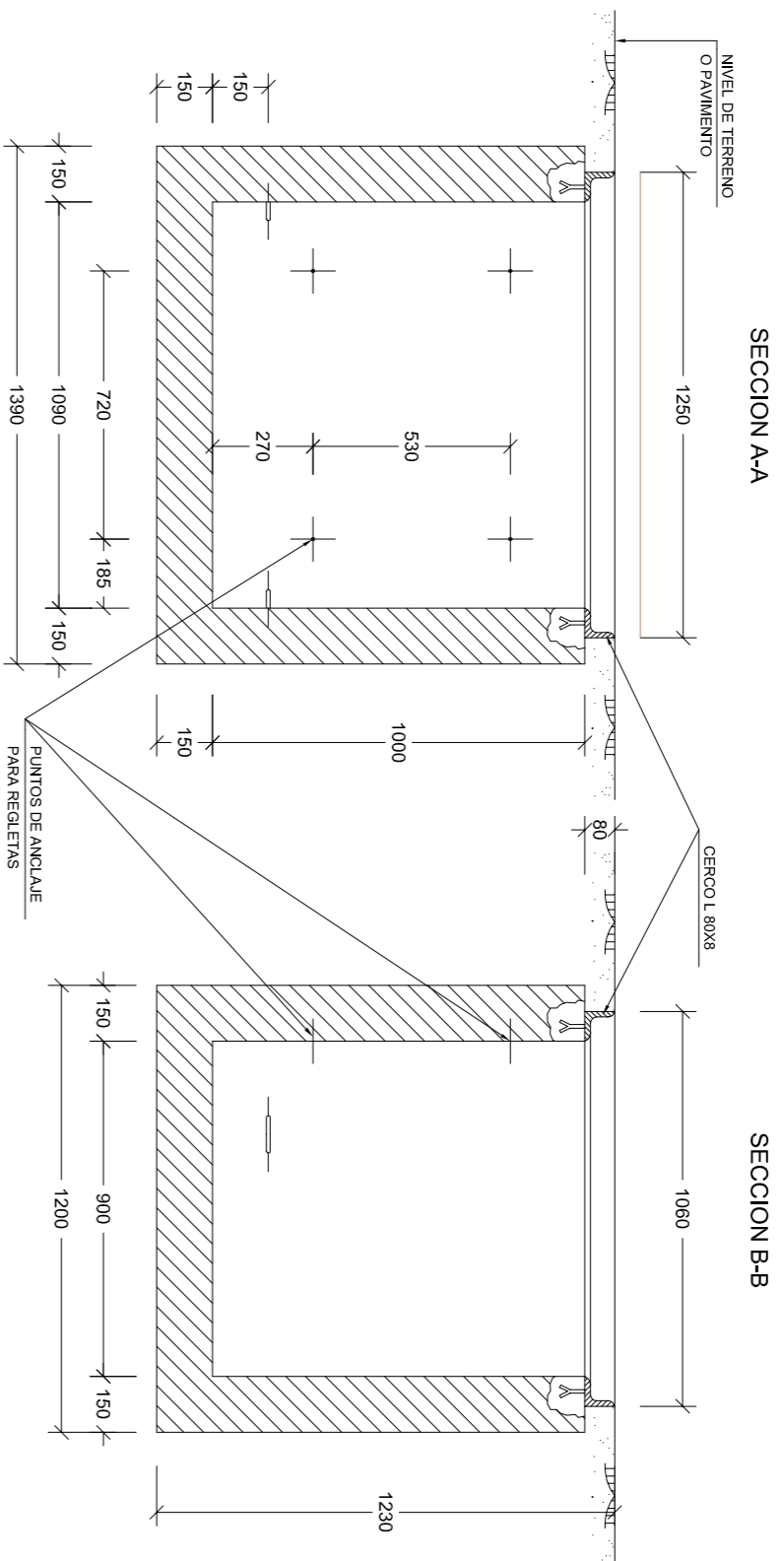
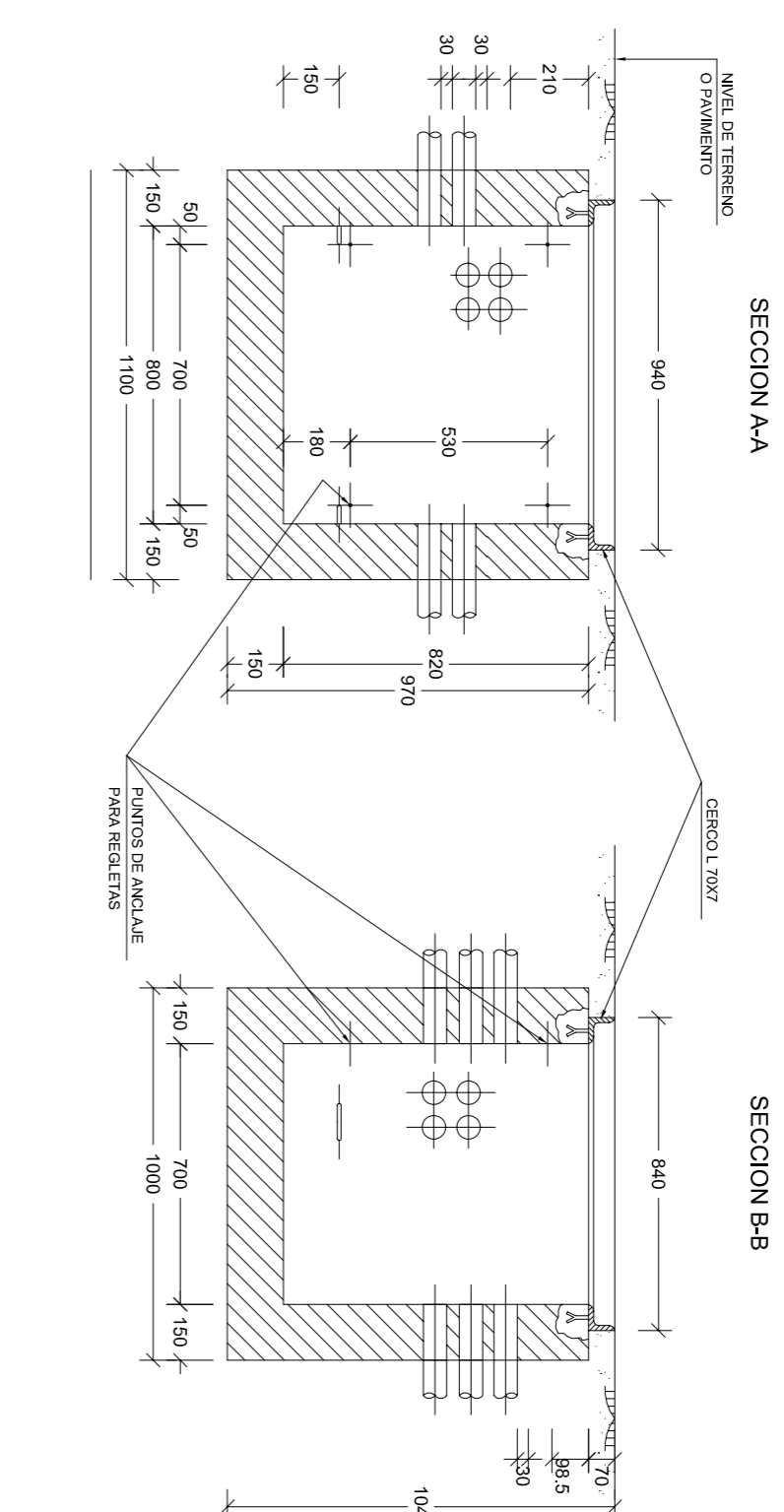


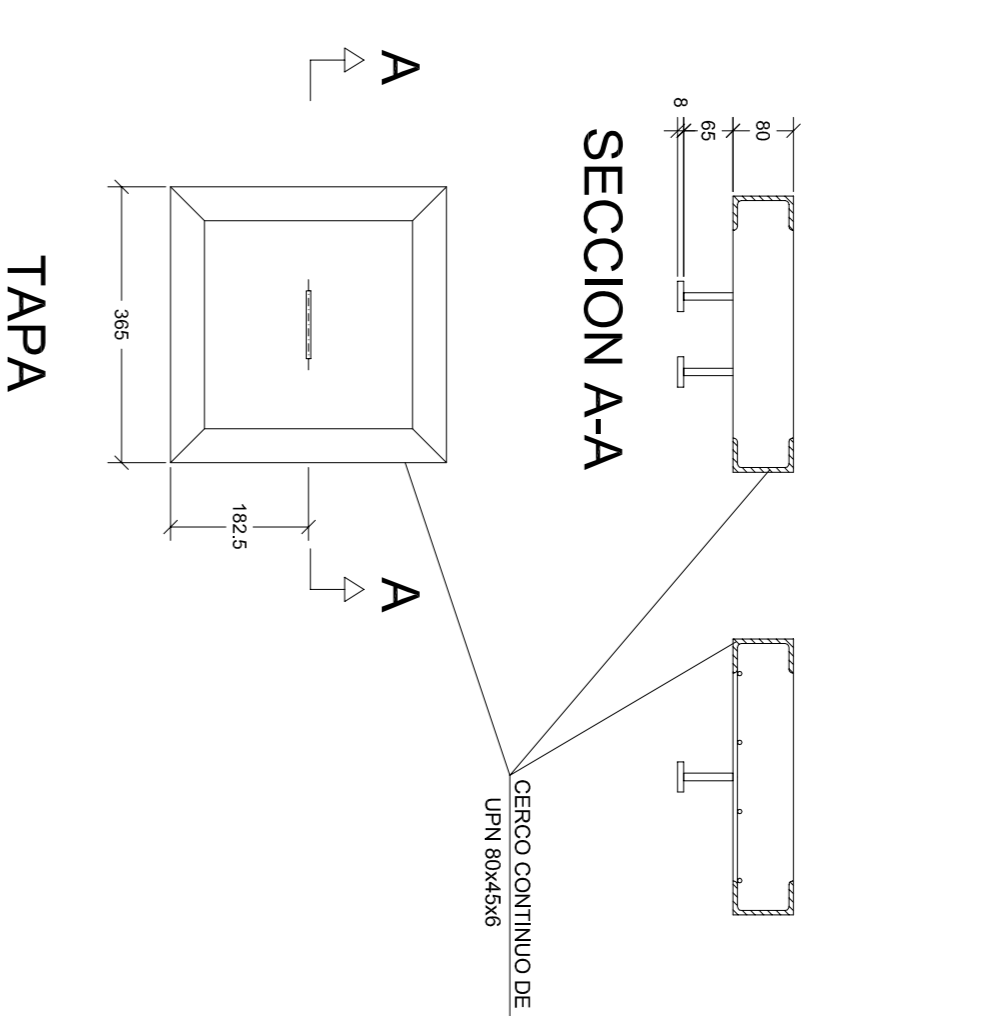
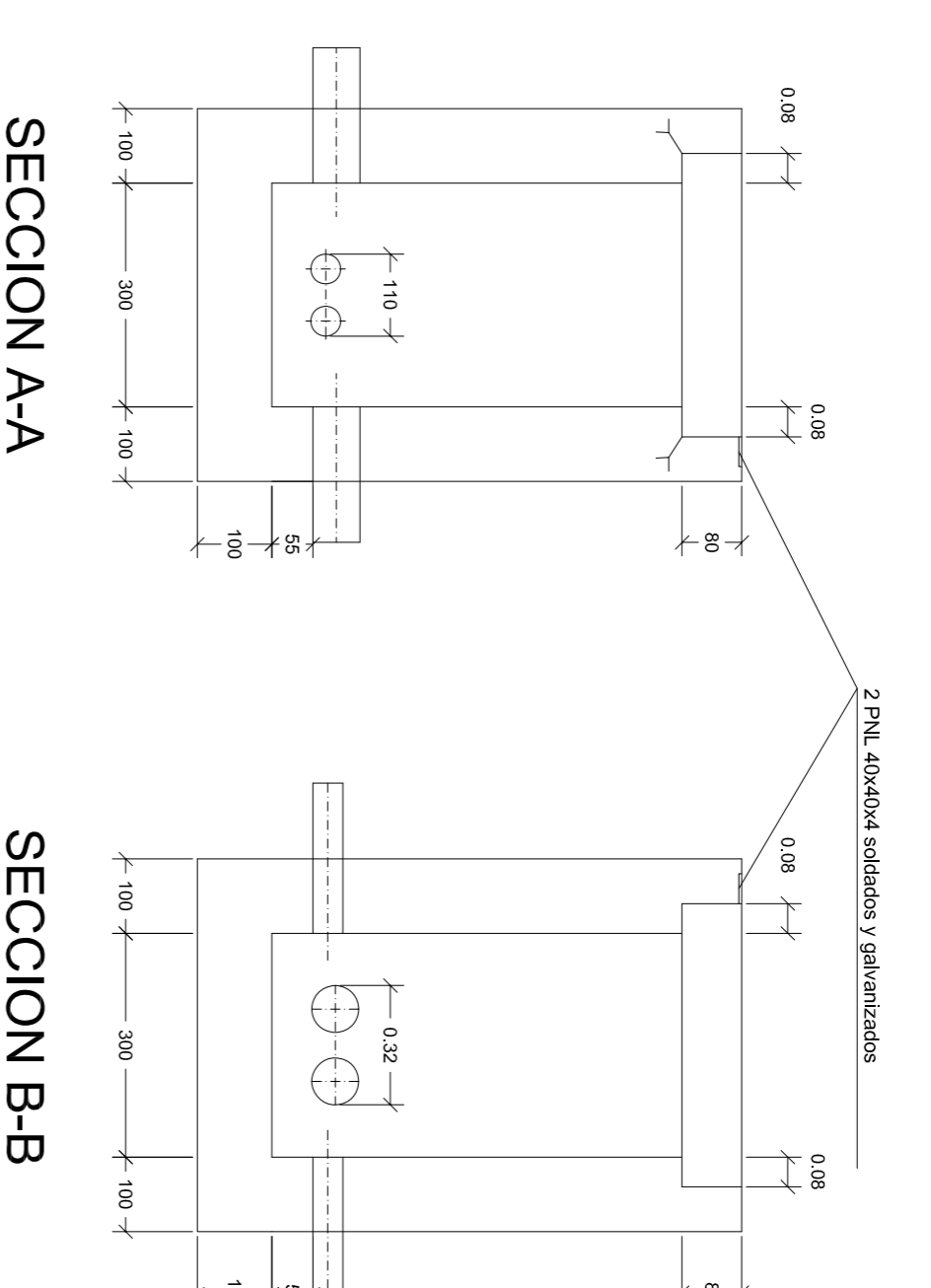
ARQUETA TIPO "D"
E 1:20
(todas en mm)



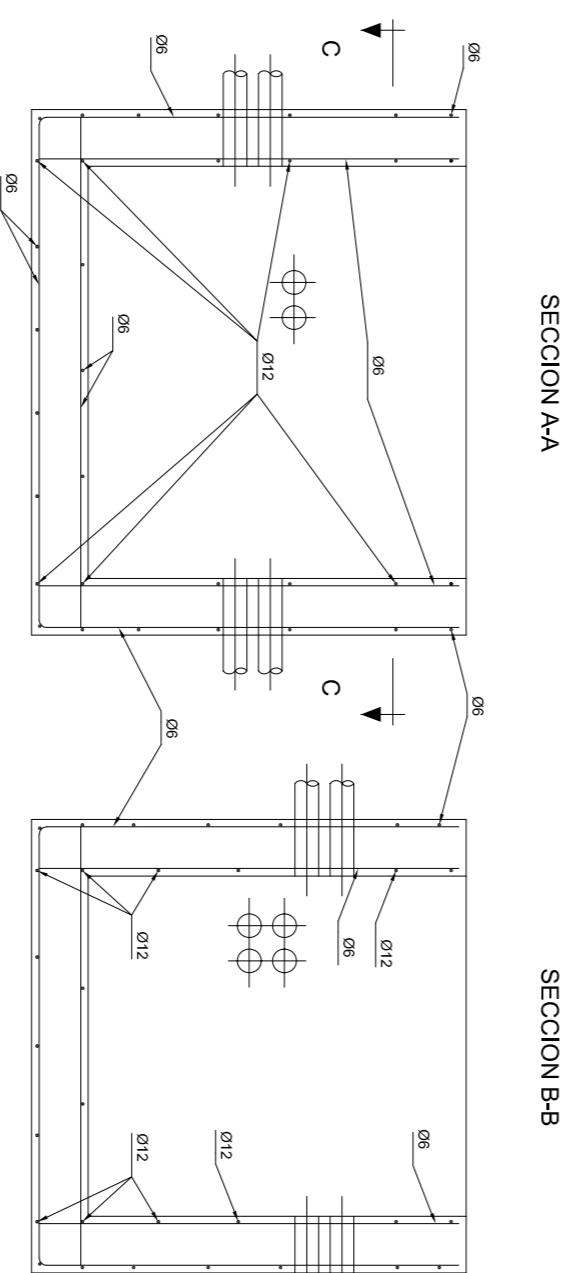
ARQUETA TIPO "H"
E 1:20
(todas en mm)



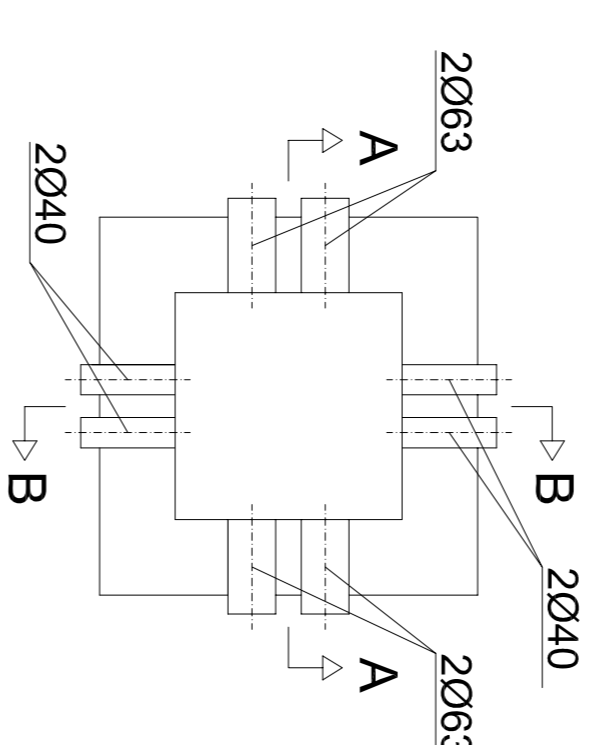
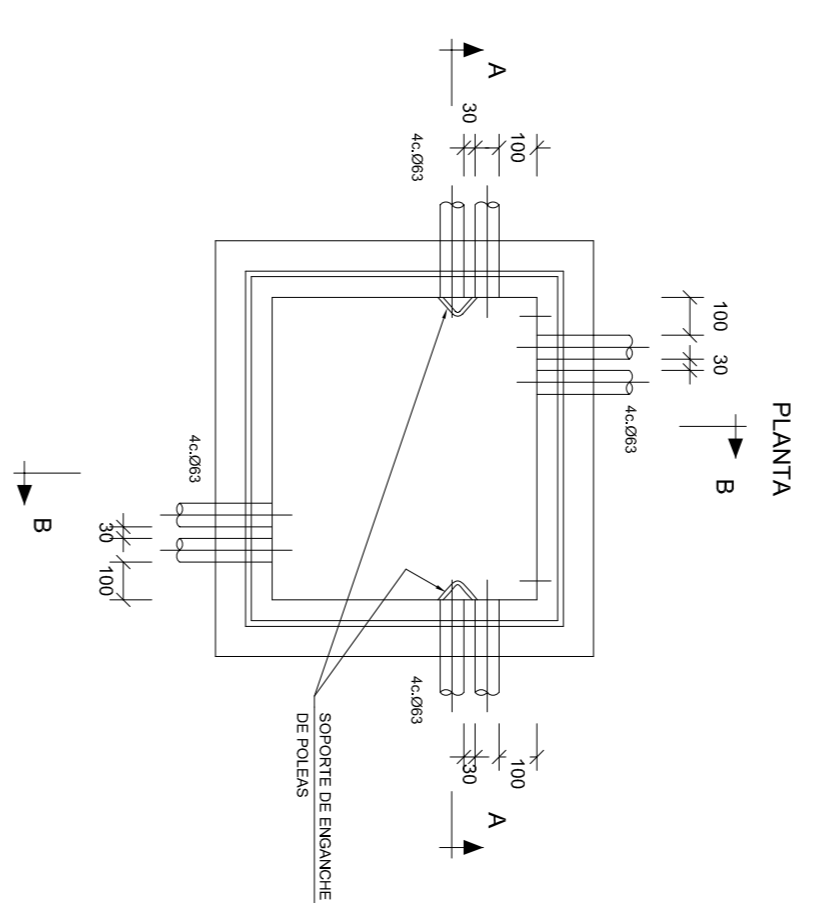
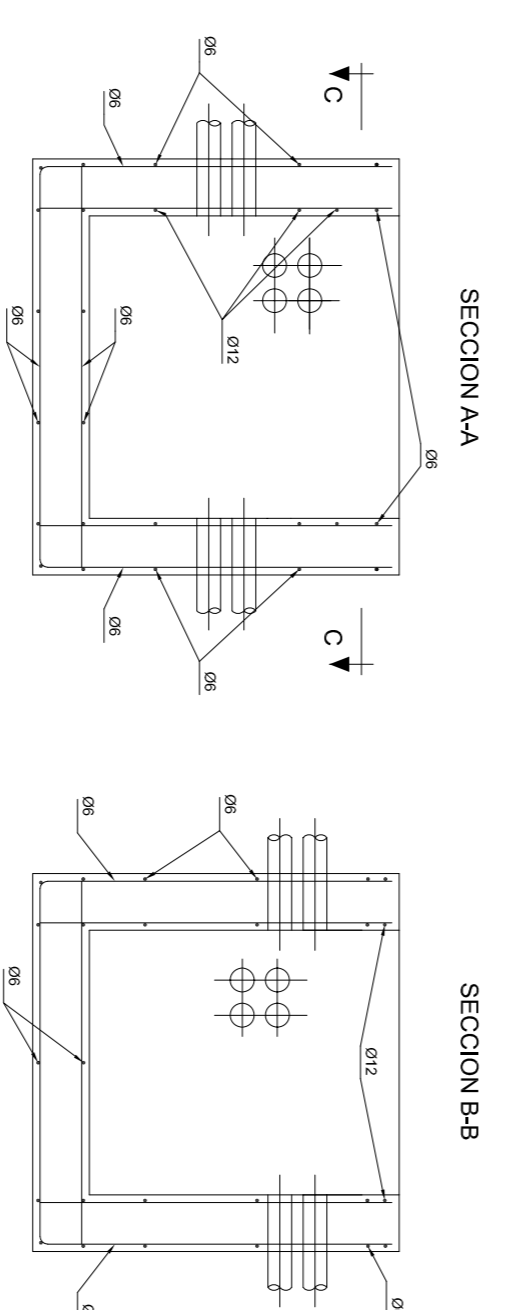
ARQUETA TIPO "M"
S/E
(todas en mm)



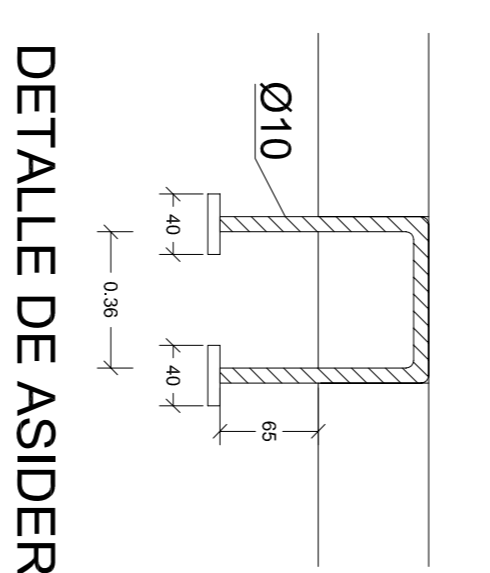
ARQUETA TIPO "D" ARMADO



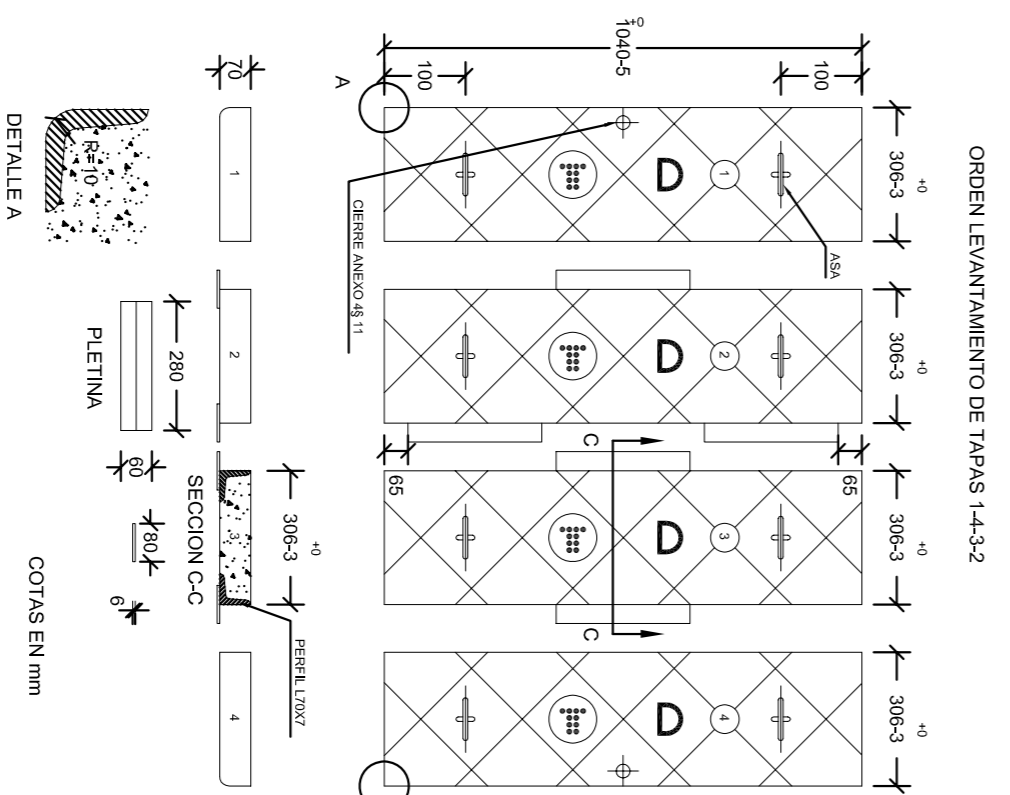
ARQUETA TIPO "H" ARMADO



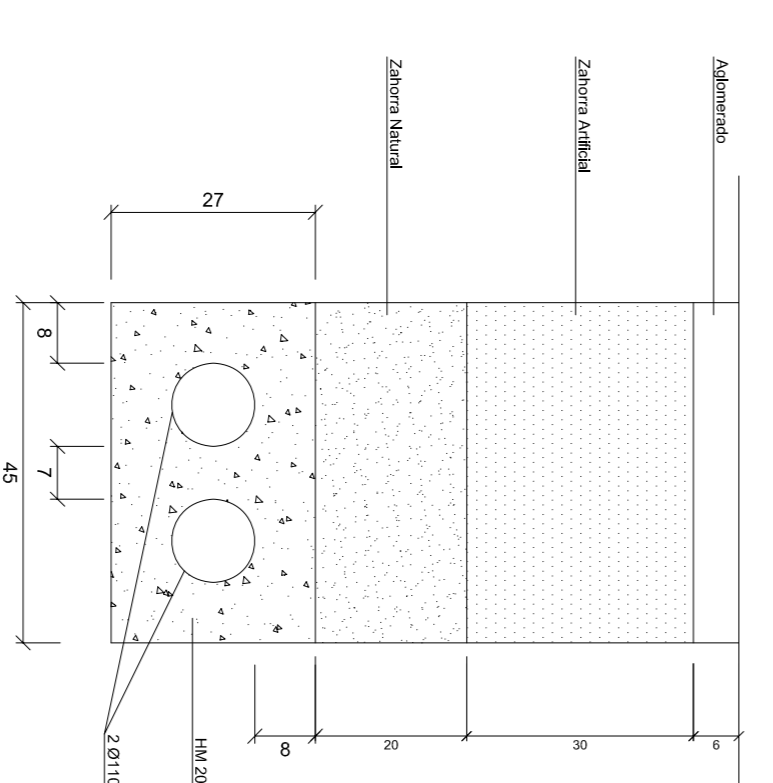
NOTAS:
-COTAS EN mm.
-HORMIGON fck=150kg/cm2
-HORMIGON fyk=4100kg/cm2



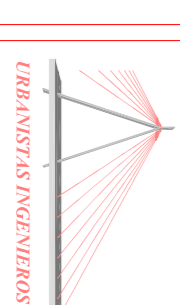
TAPA



CRUCE BAJO CALZADA



PROYECTO DE URBANIZACIÓN
DE LA UE-P3
EN XALÓ. (ALICANTE)



MARTA TORMO VALENTE - INGENIERA DE CAMINOS C.D. Nº 22.075

PROMOTOR: AYUNTAMIENTO DE XALÓ

TÍTULO DEL PLANO: DETALLES DE TELEFONIA

FECHA: SEPTIEMBRE 2004

ESCALA: INDICADAS

No. PLANO: 11.2